

## Remarks:

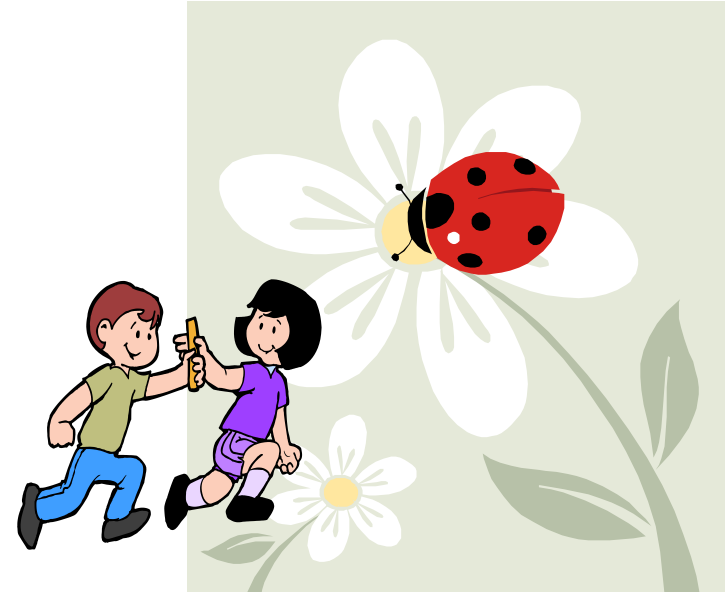
1. Enrollment priority will be given to those students who were enrolled in the 2015 Agapeland Summer Program. All applications will be assessed in the order received.
2. Due to limited available space, part-time applications will not be accepted.
3. Application deadline is 4/30/16. A \$20 late fee will be assessed on all applications received after the postmarked date of 4/30/16.
4. All tuition are non-refundable and non-transferable. All tuition and lunch fees with completed application and lunch forms must be received by 5/31/16.
5. A student information packet will be mailed to the student's home address the week of June 06, 2016.
6. Agapeland Summer Program is not a childcare program, thus, tuition may not be tax-deductible.
7. Limited scholarships are available for families with special financial needs.
8. Agapeland Summer Program may not be able to accommodate students with special needs.

## 注意事項：

- 一、 去年愛加倍園暑期班學生有入學優先權，所有入學申請以收件先後為準。
- 二、 由於名額有限，本課程暫不接受部分時間的申請表。
- 三、 凡在 4/30/16 (以郵戳為憑) 以後報名者，需多繳 20 元。
- 四、 所有學費概不退還或轉讓；學費全額必需於 5/31/16 之前繳清。
- 五、 學生入學資料將於 6/06/16 寄出。
- 六、 愛加倍園暑期班非托兒服務，所繳交的學費不一定可抵稅。
- 七、 愛加倍園暑期班為有需要的家庭備有助學金可供申請。
- 八、 愛加倍園暑期班未必能夠取錄有特殊需要的學生。

# 愛加倍園暑期班

6/15/2016 – 8/05/2016



For K – 8<sup>th</sup> Grade Students in Fall 2016

參加資格 - 2016 年秋季升讀幼稚園至八年級學生

378 – 18<sup>th</sup> Avenue, San Francisco, CA 94121

Tel: 415-387-7204 Fax: 415-751-6389

Web site: [www.accsf.org](http://www.accsf.org) Email: [accsf@sbcglobal.net](mailto:accsf@sbcglobal.net)

## Statement of Purpose 宗旨:

To provide an enriching environment in which students are engaged in learning and will grow in competence in the following areas: language arts; math; creative expressions; Chinese language; culture awareness; and social skills.



Agape Community Center 愛加倍社區中心

# Agapeland Summer Program

Additionally, students will develop and cultivate ethics based upon Christian values.

提供優良的環境，幫助學生積極投入，作多方面成長；內容包括中文、英文、數學、美術、創作、文化意識等；此外，也用基督教的價值觀培養他們的品德。

### Program Schedule 課程時間表

Time 時間	Activities 活動
8-9 am	Morning Extended Hour 課前班
9-12 noon	English Language; Mathematics; Bible Stories; Science Experiments; Arts & Crafts; Songs; Playground Time; Games; etc. 英文、數學、聖經故事、科學實驗、美勞、歌唱、遊戲、戶外活動等等。
12 noon-1 pm	Lunch 午餐
1 - 3 pm	Chinese Language (Mandarin or Cantonese) and Cultural Class. 中文(國語或粵語)及文化活動
2:50-3:20 pm	Pick- up time 放學
3-5:30 pm	<b>PM Extended Hours 課後班活動:</b> Homework; Arts & Crafts; Painting; Cooking; Singing; Dancing; Fitness; Outdoor activities; Movies; etc. 功課、美勞手工、繪畫、烹飪、音樂、舞蹈、體育、戶外活動、電影欣賞...等
5:30-6 pm	Pick-up time 放學

Field Trips too! 還有戶外活動!

### Tuition 學費:

<b>Full Day Program</b>	全日課程	9am – 3pm	<b>\$900</b>
<b>Extended Hour</b>	延伸時間		
<b>Before school</b>	課前	8am – 9 am	<b>\$190</b>
<b>After school</b>	課後	3pm – 6 pm	<b>\$400</b>
<b>School Lunch (8-weeks)</b>	午餐	12pm – 1pm	<b>\$160</b>

### Sibling Discount 兄弟姊妹優惠:

When more than one student from the **same family** is enrolled in the program, each additional **sibling** will be eligible for a **10% tuition discount**.

親兄弟姊妹一同報名，第二人以上學費九折優待。

### Tuition includes 學費包括:

Agapeland T- Shirt; Chinese textbook & workbook; Bible (for new students only); supplemental worksheets for English and Math; Arts & Crafts materials; and snacks (snacks only for participants of **extended hours**).

愛加倍園T恤一件、英文聖經(限新學生)、英文及數學練習教材、中文課本及作業、美勞手工材料及點心(點心只供應參加課後班學生)。

### ENROLLMENT 報名辦法:

All new applicants will be contacted to schedule an interview. The student must be present at the interview.

All tuition with the completed application form must be received before official enrollment of student.

所有第一次申請入學者，校方會與您聯絡，並約時間與您面談，面談時，學生必須出席。

請將報名表填好，連同學費全額，面繳或郵寄至：

愛加倍園暑期班  
**Agapeland Summer Program**  
**378 - 18<sup>th</sup> Avenue, San Francisco, CA 94121**

**Please make check payable to “ACC”**  
**支票抬頭請寫“ACC” 謝謝!**